



DECEMBER 10, 2020

Covid-19 Update

NEWS TO KNOW

Milwaukee County virus activity is "leveling" while burden remains high

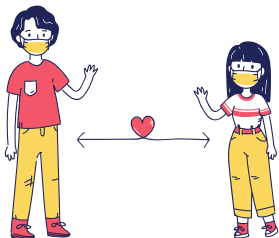
- The Milwaukee County Health Department has summarized virus activity in our community as "leveling" with a high burden of the virus still existing.
- Milwaukee County's positivity rate was reported as well over 10% and showing signs of increasing with new positive cases still much higher than early in the pandemic. They issued this statement:

"We must be vigilant in anticipation of a surge from Thanksgiving gatherings and ahead of the upcoming holiday season. The best way is to stay home and only have contact with members of your immediate household. When it's essential to leave the home, wearing a mask and distancing in a open air environment are the best ways to protect yourself and others from spread of the virus. We must take the necessary steps now and in the coming weeks to control the spread of COVID-19 during a season when we are all much more vulnerable to contracting the virus."

Statistical information is sourced from official state and local Covid-19 dashboard data.

FREE MASKS

If you or someone you know is in need of a face mask, all **Milwaukee Public Libraries** have them available free of charge. Other community locations may also be able to provide masks on a rotating basis, please feel free to contact us at: 414-897-8033 for the

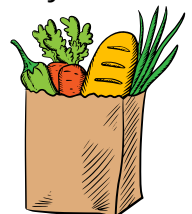


most up to date information about availability and how to locate a free mask distribution location.

Emergency Food Available

Not sure where to find emergency food? **The Hunger Task Force** has put together an interactive map of confirmed sites providing food safely to children or adults. The map tells you what days and times the meal service is open and is updated daily. The website to visit is listed below. If you don't have an internet connection, you may also call 211 for more information.

<https://www.hungertaskforce.org/what-we-do/get-help-now-covid-19/>



Sources:

1. Acclaimed Ojibwe Author and Professor: Anton Treuer (2012). Everything you wanted to know about Indians but were afraid to ask. Saint Paul, MN: Borealis Books.
2. <https://www.lcotribe.com/our-history>

Anishinaabe

is the Ojibwe or Anishinaabemowin word for *The Original People (2)* and refers to all Indians from all tribes(1).

Ojibwe

may be translated as *Pucker* which is thought to reference a style of moccasin or could have also been a word to refer to a type of cooking or manner of speech.(2) Today, it is used as a term of self-reference by many Ojibwe tribes and individuals.(1)

Chippewa

A corruption in speech and writing of the word *Ojibwe*, Chippewa was the term widely used and recognized by the US Government and is written into various treaties.(1)

The Six Ojibwe Nations in Wisconsin are:

- Bad River Band of Lake Superior
- Lac Courte Oreilles Band of Lake Superior
- Lac du Flambeau Band of Lake Superior
- Red Cliff Band of Lake Superior
- Sokaogan Community (Mole Lake Band)
- St. Croix Indians of Wisconsin

Contact Us

**American Indian Council
on Alcoholism, Inc.**

414-930-9210
aica.recovery@gmail.com
aicamilwaukee.com

Providing the American Indian Community in Greater Milwaukee with:

Alcohol & Substance Abuse Prevention
Support Meetings
Community Outreach & Education
Information & Referrals

National Indian
Health Board 

DOMESTIC & PARTNER VIOLENCE DURING COVID-19

Tips for Taking Care of Yourself & Your Loved Ones



Share your feelings and concerns with a trusted friend or family member. Or, call the Strong Hearts Native Helpline at 1-844-NATIVE.



Make a plan in the event that leaving home is the best way to assure the safety of yourself and family members.



Contact a family member, friend, shelter or hotel for safe space options. Check the shelter's policy during the pandemic.



Reach out to friends and family who may be experiencing violence. Caring for loved ones is a shared responsibility.

NIHB is your COVID-19 resource for Tribal health.
www.nihb.org/covid-19

Knock Knock...

Isabell...

Who's There?

Isabell Who?

Is a bell necessary on a cow's neck?

